

drylin® R solid polymer bearings | Product range

Linear plain bearings with Japanese dimensions made from iglidur® J4



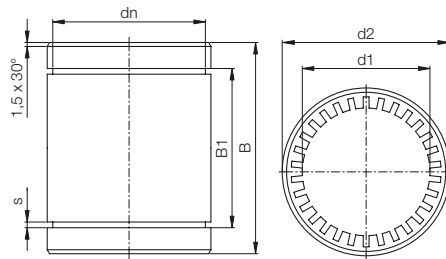
Order key

Type

Size

R J 4 J P-01-10

Closed	igidur® J4	Japan standard	Precise	Standard	d1
--------	------------	----------------	---------	----------	----



- Alternative to ball bearings with Japanese dimension
- Quickly assembled
- Secured by circlips



⁷⁸⁾ According to igus® testing method ► Page 1000

⁸²⁾ Design standards ► Page 944

Please note: installation instructions ► Page 945

Material table ► Page 1432



min. -20 °C

max. +60 °C

Technical data

Part No.	d1-Tolerance ⁷⁸⁾ [mm]	F max. dynamic ⁸²⁾		Weight [g]
		P = 5 MPa [N]	P = 35 MPa [N]	
RJ4JP-01-08	+0.000 +0.040	200	800	2
RJ4JP-01-10	+0.000 +0.040	300	1,200	6
RJ4JP-01-12	+0.000 +0.040	400	1,600	8
RJ4JP-01-16	+0.000 +0.040	700	2,800	16
RJ4JP-01-20	+0.000 +0.040	1,000	4,000	23
RJ4JP-01-25	+0.000 +0.050	1,550	6,500	47
RJ4JP-01-30	+0.000 +0.050	2,200	8,500	72

Dimensions [mm]

d1	d2	B	B1	s	dn	Part No.
8	15	24	17.5	1.1	14.3	RJ4JP-01-08
10	19	29	22.0	1.3	18.0	RJ4JP-01-10
12	21	30	23.0	1.3	20.0	RJ4JP-01-12
16	28	37	26.5	1.6	26.6	RJ4JP-01-16
20	32	42	30.5	1.6	30.3	RJ4JP-01-20
25	40	59	41.1	1.85	37.5	RJ4JP-01-25
30	47	64	44.6	1.85	42.5	RJ4JP-01-30